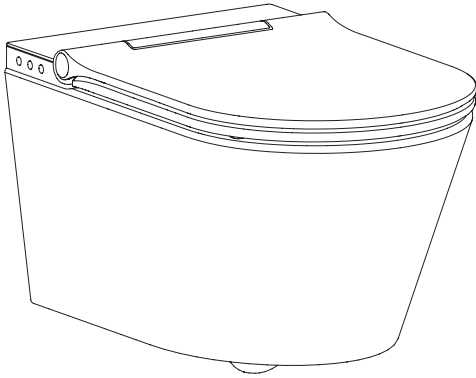




Quickstartanleitung Dusch-WC "Loumea"



WS-BAD-DWC-9323322-92100-WS_QUICKSTART_0123

evenes GmbH | Rote Lander 4 | 72336 Balingen | Tel. +49 74 33 39 17 200 |
Fax +49 74 33 39 17 201 | info@evenes.de | www.evenes.de



VIDEO
INSTALLATION UND MONTAGE

VIDEO
INSTALLATION ET MONTAGE

VIDEO
INSTALLATION AND MOUNTING

Installation und Montage sind in der Anleitung auf den Seiten 13 bis 19 zu finden.

Installation and assembly are described in the instructions on pages 13 to 19.

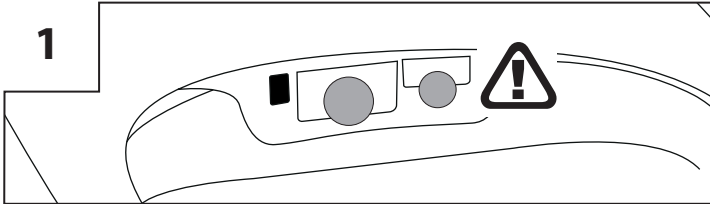
Funktionen sind in der Anleitung auf den Seiten 20 bis 26 sowie 29 bis 30 zu finden.

Functions are described in the instructions on pages 20 to 26 and 29 to 30.

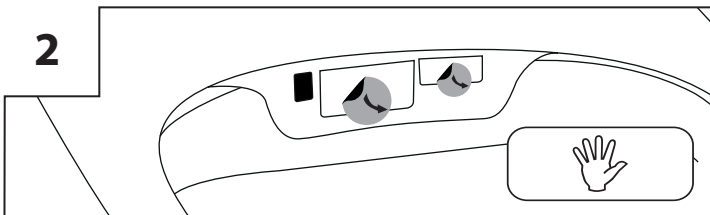
AUFKLEBER AUTOCOLLANTS/STICKER



1



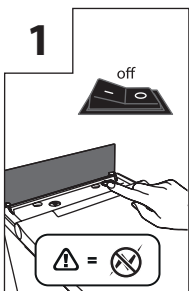
2



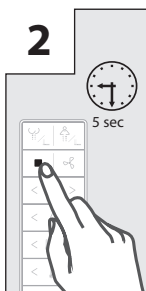
VERBINDUNG/FERNBEDIENUNG CONNEXION/TELECOMMANDE CONNECTION/REMOTE



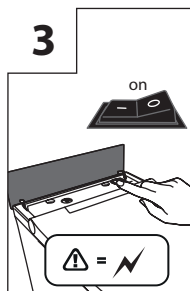
1



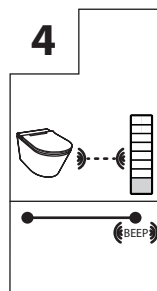
2



3



4

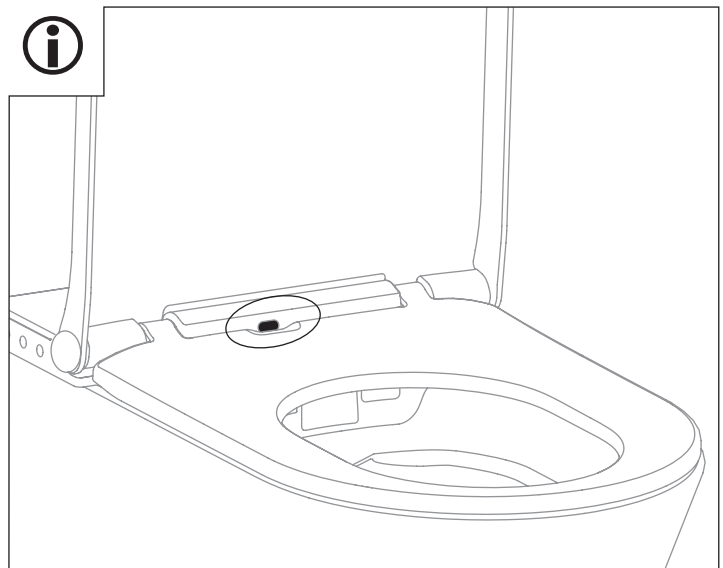


SENSOR

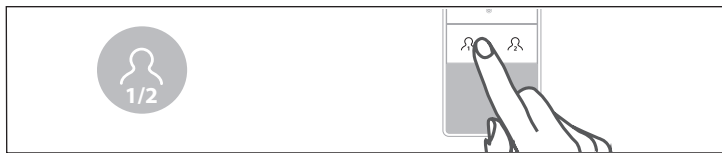
**ACHTUNG! - KEINE FUNKTION
OHNE AUSLOSEN DES SENSORS
SENSOR**

**ATTENTION - PAS DE FONCTIONNEMENT
SANS DECLANCHMENT DU CAPTEUR
SENSOR**

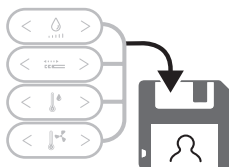
**ATTENTION! - NO FUNCTION
WITHOUT TRIGGERING THE SENSOR**



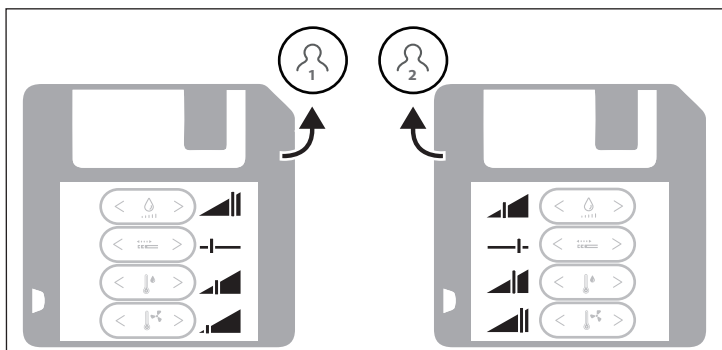
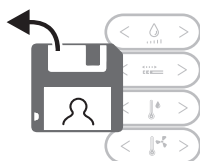
BENUTZERSPEICHERUNG ENREGISTREMENT DES UTILISATEURS USER STORAGE



1x = 3 sec



1x =



FUNKTIONSLICHTER LAMPES DE FONCTION/FUNCTIONAL LIGHTS



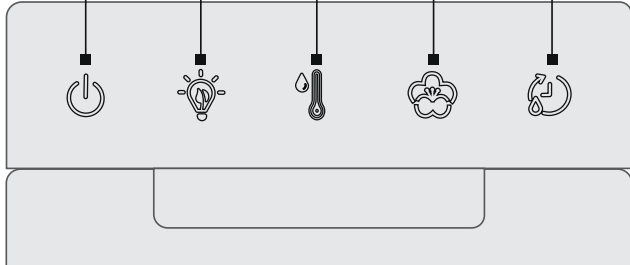
Nachtlicht
Veilleuse
Nightlight

Geruchsabsaugung
Aspiration des odeurs
Deodorization

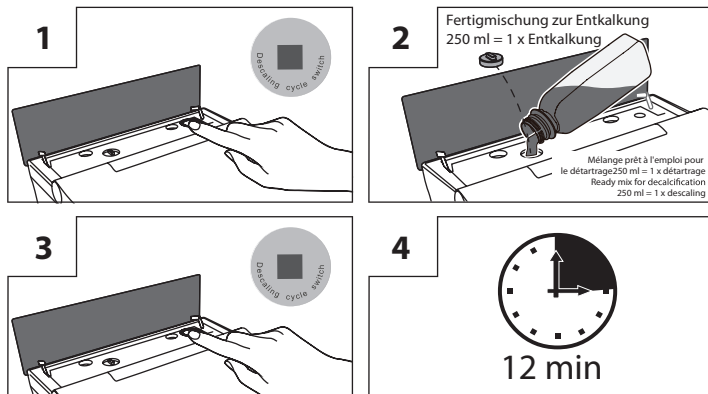
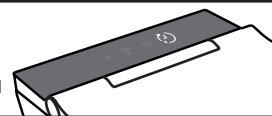
An/Aus
Marche/Arrêt
On/Off

Wassertemperatur
Température de l'eau
Water temperature

Entkalkung
Détartrage
Descaling



ENTKALKUNG DÉTARTRAGE/DESCALING



DÜSENREINIGUNG NETTOYAGE DES BUSES/NOZZLE CLEANING

